

MY MÜVI!
FaceCam HD



INSTRUCTION MANUAL

Contents

Contents	1
Preface	2
Notice for use	2
System requirements	4
Getting started	4
1. Appearance and Buttons	5
2. Basic operation	7
Installation and Use of ArcSoft MediaImpression	14
Software installation	14
Xvid codec installation	15
MediaImpression Installation and Use:	18
Product specifications:	24

Preface

Thank-you for your purchase of a MyMuvi Personal Digital Camcorder. Please read this manual before using this camera and put it in safe place for future reference.

The content in this manual refers to the latest information available at the time of printing. The screen display, illustration and other information in the manual are representative of the operation of the camera. Your camera may differ due to changes in firmware, technical updates and production batch.

Notice for use

General:

1. Never open the housing of the digital video camera; Touching some parts may cause electric shock.
2. Moisture, impact or excess temperatures may damage this digital video camera.

Memory and storage:

1. The camcorder uses SD/MMC/SDHC from 128mb to 16GB (not included).
2. When purchasing a SD/MMC/SDHC card, be sure to take the camcorder with you to ensure compatibility.
3. When a SD/MMC/SDHC card is inserted, the internal memory (if any) of this camcorder will not function.
4. SD cards have a write-protect switch which is used to prevent deletion of data. When this switch is in the locked position, the data on the card will be protected from erasure. When the card is in write-protect state, it cannot be used for shooting video, taking pictures or deleting data.
5. Memory cards should not be used for permanent storage of data. For long term storage, data should be copied to other media such as hard disk or CD/DVD.
6. Memory cards, either new or those that have been used in other digital cameras/video

camera must be formatted in this camera prior to use.

Maintenance and care:

1. Store your camera in a case to avoid scratching the lens and screen.
2. To clean the lens, first blow the dust from the lens surface, then use a cloth or tissue designed for optical devices to clean the lens. If necessary, use a drop lens cleaner. Never use an organic cleaner to clean the camcorder.
3. Never touch the lens with your fingers.
5. Always store the camcorder in a cool, dry, dark place with the battery removed.

Other notices:

1. When switching video output between the LCD display and other video devices, be sure the camcorder is not actively recording or playing a video.
2. This camcorder is suitable for use in temperatures between 32°-104° F. Never leave the camcorder in places with extremely high temperatures, such as in the car, or in moist damp areas. In order to prevent condensation, when moving from a cold place to a warm place, keep the camcorder in sealed plastic bag. Open the bag when the camcorder reaches room temperature.
3. TV programs, movies, music, images and other resources may be protected by copyright; therefore, without prior permission, the use of these resources may violate copyright laws and regulations.

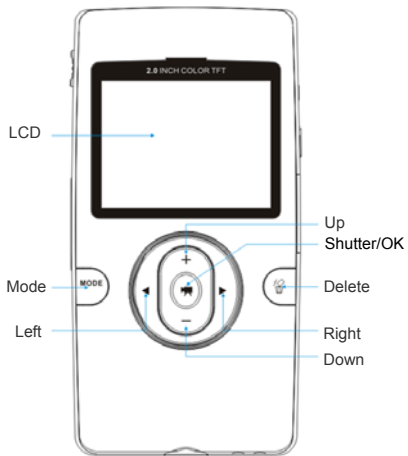
System requirements

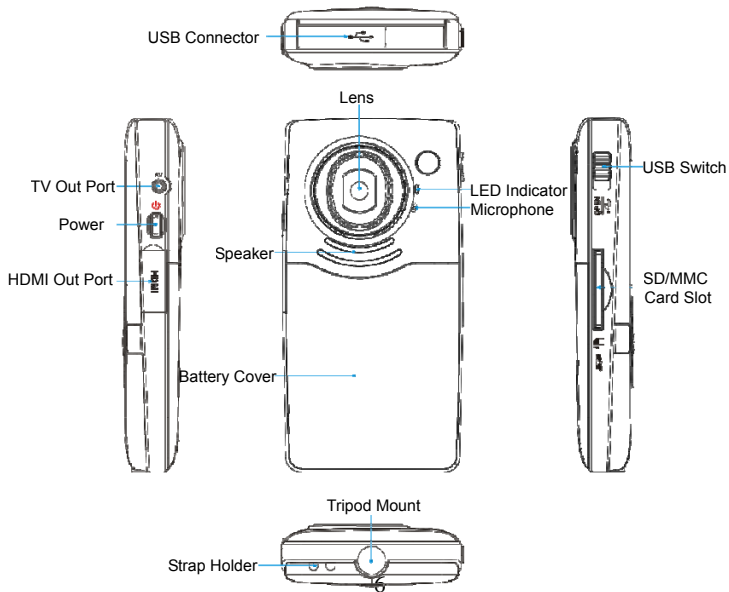
Please refer to the following minimum requirements for your computer system to interface with the camcorder. These are the MINIMUM requirements, faster processors and more memory will result in a better user experience.

Operation System	Microsoft Windows 2000,XP, vista, Windows7
CPU	Intel PIII667 or CPU of equal performance or above
Memory	Above 128 MB
Sound card and display card	DirectX8 or above.
CD-ROM	4× speed or above
Hard Disk	1 GB or more of useable space
Other	One standard USB 1.1 or USB 2.0 port

Getting started

1. Appearance and Buttons

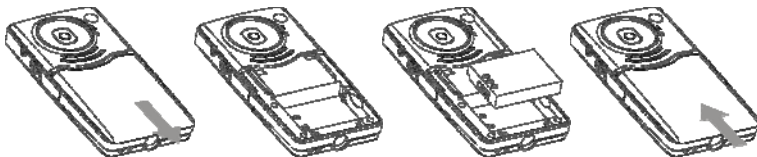




2. Basic operation

2.1 Install battery

Press and slide the battery cover as shown. Insert the lithium battery. Be sure to observe the correct polarity of the battery terminals. Close the battery cover.



2.2 Charge Battery

1. Power off the camera.
2. Connect the camera to the computer USB port or an optional USB AC power supply to charge the battery.
3. During charging, the busy light will come on. The light will go out when the battery is fully charged.

2.3 Insert SD/MMC/SDHC card

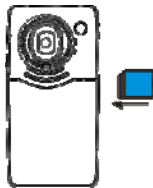
Insert the SD Memory card into the SD/MCC/SDHC card slot. Push it down until the card

stays latched. Do not force the card. If it cannot be inserted easily, check the card's position according to the position mark on the camera.

Push to release the inserted card if you wish to remove or replace the card.

Turn your camcorder OFF before inserting or removing the SD Card. Failing to power off the camera may cause permanent damage to the card or corrupt the data on the card.

- Note that the SD Card has a LOCK switch on the side. Set the switch to un-LOCK position to be able to store videos or still pictures on the SD memory card.



2.4 Power on/off

In power-off state, press and hold the power key to power on the camera.

In power-on state, press the power key to power off the camera.

If the camcorder is idle for 1 minute (default), the camcorder will power off automatically.

In power-on state, when battery level is very low, the camcorder will turn off after several seconds. You must charge or replace the battery with a freshly charged battery in order to continue shooting.

2.5 Setup menu

In power-off state, press and hold Shutter/OK key then press the POWER key. When the setup menu is displayed you can release the Shutter/OK key and press the direction keys to move the cursor or adjust the menu value. Press the Shutter/OK key to confirm your menu selection. Press the Delete key to exit the menu. In the setup mode you can set the Language, Date & Time, TV out mode, Power frequency and view the Firmware version.

2.6 Changing mode

At power on, the camcorder will default to the video record mode. Press the MODE key to change between video recording, still photo mode or playback.

2.7 Video recording mode

In video recording mode, press Shutter/OK key to start recording, While recording, press the Shutter/OK key again to stop recording.

In the recording standby mode, press the Left or Right navigation key to change the video size between HD(1280x720), D1(720x480), VGA(640x480); Press the up key or down key to zoom in or zoom out the image.

2.8 Still photo mode

In Still photo mode pressing the Shutter/OK key will capture the photo.

In the Still photo standby mode, pressing the Left or Right navigation key to change the video size between 5M(2592x1944), 3.1M(2048X1536), 1.3M(1280x960); Press the up key or down key to zoom in or zoom out the image.

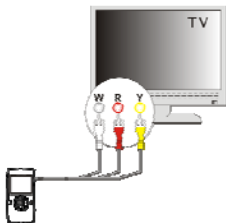
Note:

- If the memory card is full or locked, when you press the Shutter/OK key the camera will not record.
- Be sure to power off the camera before inserting or removing the memory card.

2.9 Playback mode

Press mode key to select the playback mode. Press ◀ key or ▶ key to select the file for playback. After you select the file, press the Shutter/OK key to begin playing video or viewing the photo. During video playback, press and hold ▶ or ◀ key to fast forward or reverse. Press the Shutter/OK key to pause or resume playing. Press the Delete key to stop playing the video.

When viewing photos press the up or down key to zoom in or zoom out the image; In the zoom in mode, pressing the Shutter/ OK key enters the pan mode, allowing you to press the direction keys to move the position of the photo on the LCD screen.



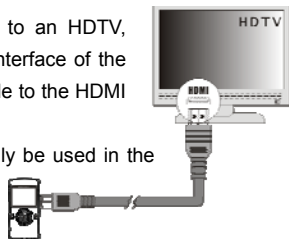
2.10 TV output

After the camera is powered on, insert the mini plug of the AV cable into the TV output port of the camera. The yellow RCA plug of the cable should be connected to VIDEO IN port of TV, red and white RCA plug should be connected to corresponding AUDIO IN port of TV.

2.11 HDMI output

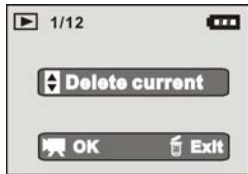
To output the image and sound from the camcorder to an HDTV, please insert the HDMI cable (Optional) to the HDMI interface of the camcorder. Connect the other terminal of the HDMI cable to the HDMI input on the HDTV.

Note: When using HDMI output, the camcorder can only be used in the playback mode.



3 Deleting files

When in standby or playback mode, press the Delete key to enter the Delete menu mode. Use the direction keys to select “Delete current” or “Delete all”. Selecting “Delete current” then pressing the Shutter/OK key will delete current image; Selecting “Delete all” then pressing the Shutter/OK key will delete all images. Press the Delete key to exit the Delete mode.



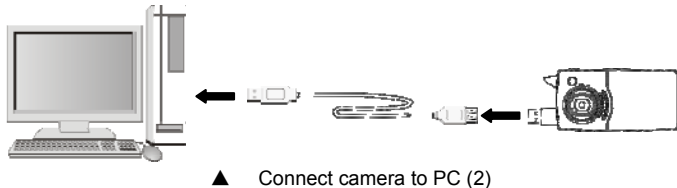
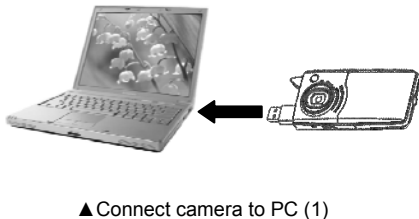
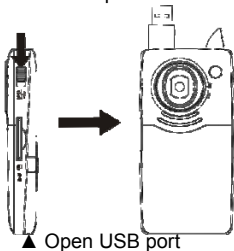
4 Connect to PC

1. Slide the USB Switch UP to extend the USB connector then turn the camcorder ON.
2. Insert camcorder USB connector into computer's USB port, or use a USB extension cable (optional) to make the connection.
- 3.

5 Download files from camera to PC

1. After connecting to computer, go to "My Computer" and open the "Removable Disk." Videos and photos will be saved in the \DCIM\ 100MEDIA folder in the removable disk. Choose the desired video in the 100MEDIA folder and copy (drag with mouse) it into the target folder in the on the computer.

2. You can use ArcSoft MediaImpression to edit videos.
3. ArcSoft MediaImpression can be installed from CD included with your camcorder.



Using ArcSoft MediaImpression

There are two pieces of software in CD provided for image processing:
The Xvid codec and ArcSoft MediaImpression

Software installation

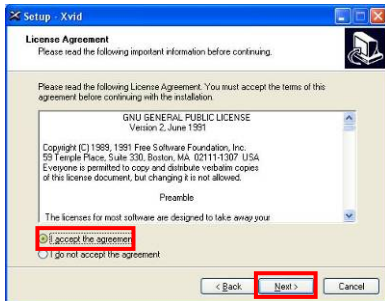
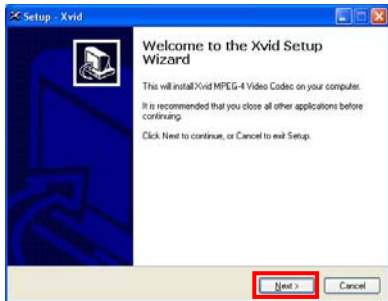
Put the CD included with the camcorder into the CD-ROM of the computer. The following menu will appear:

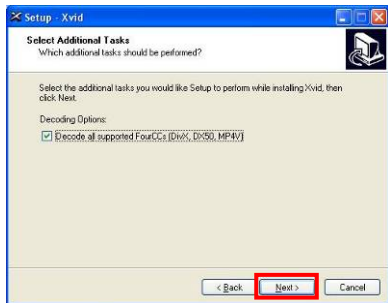
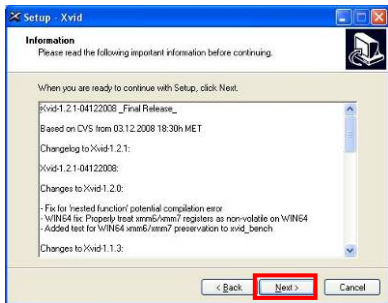


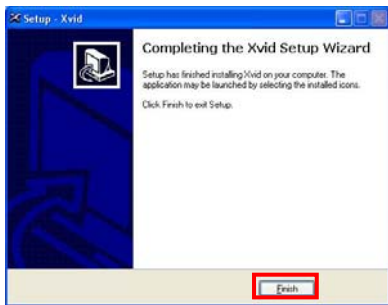
- If the CD driver does not automatically load, click the **autorun.exe** program in the root directory of the CD.

Xvid Codec Installation

Click the “Install Xvid Codec” button and complete the installation per the following instructions.





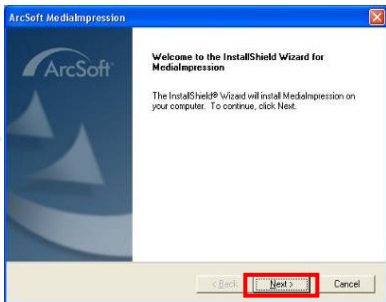


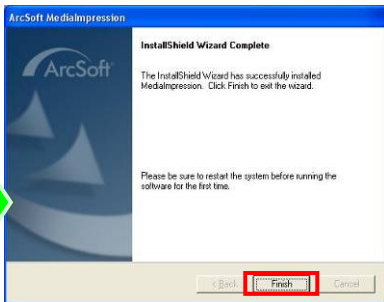
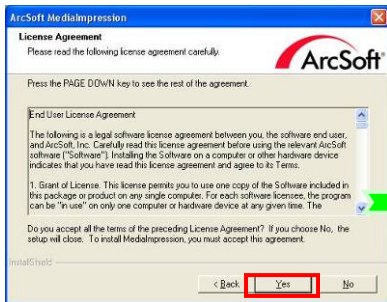
Notice:

This software is found on the CD included with your camcorder. If you want to play video you have recorded on your computer, please install Xvid codec. If your computer has a previous installation of an Xvid codec, the installation of this codec may fail.


MediaImpression Installation and Use

Click “Install MediaImpression” button and complete the installation per the following instructions.





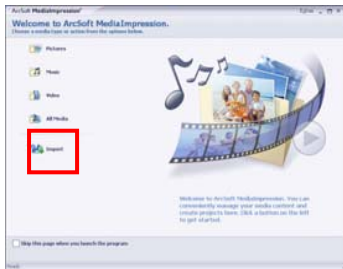
After installation, please restart the computer.
Run MediaImpression :

Double click the  icon on the desktop

or follow “Start → Programs” to open MediaImpression



After starting MediaImpression, click “Import” to import the media.



Choose the video camera storage and choose the output location.



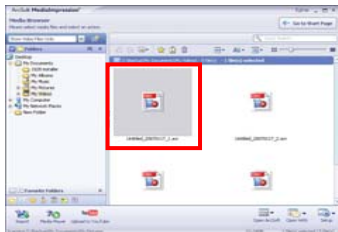
Choose require file and click the import, selected file will be stored in the output location.



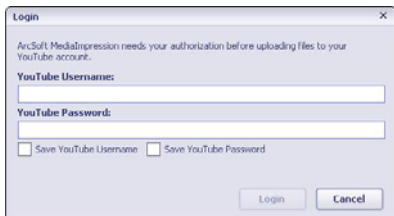
Click “Go to start page” to return the main screen. Click the “Video” or “All media” to use the “YouTube” function.



Choose file and click the “upload to YouTube”.



Enter you username and password to login the YouTube, execute upload.



A screenshot of a Windows-style dialog box titled "Login" with a close button (X) in the top right corner. The text inside the dialog reads: "ArcSoft MediaImpression needs your authorization before uploading files to your YouTube account." Below this, there are two labels: "YouTube Username:" and "YouTube Password:", each followed by a text input field. Underneath the password field, there are two checkboxes: "Save YouTube Username" and "Save YouTube Password". At the bottom of the dialog, there are two buttons: "Login" and "Cancel".

Product specifications:

Image Sensor	5 Mega Pixels
Function Modes	Record video, Record still photo, Playback
Lens	F2.8, f=3.1mm
Focus Range	120cm~infinite
Digital Zoom	4×
Shutter	Electronic
LCD Display	2.0 inch TFT Display
Resolution	Video: HD(1280x720), D1(720x480), VGA(640x480) Still photo: 5M(2592x1944), 3.1M(2048X1536), 1.3M(1280x960),
White Balance	Automatic
Exposure	Automatic
File Formats	Jpeg, AVI (Xvid)
Video Out	TV out, HDTV out
Storage Media	SD/MMC/SDHC card(max. 16GB)
USB Port	USB 2.0 port
Dimension (LxWxH)	110mm × 57mm × 19.5mm

