

**MY MÜVI!**

**FamilyCam HD**



OPERATING INSTRUCTIONS



## Contents

---

<b>Preface</b> .....	2
<b>Using a memory card</b> .....	2
<b>Proper care of a memory card</b> .....	3
<b>Maintaining your camcorder</b> .....	4
<b>System requirements</b> .....	5
<b>Features</b> .....	5
<b>Package contents</b> .....	5
<b>Appearance</b> .....	6
<b>Key functions</b> .....	7
<b>Getting started</b> .....	8
<b>Installing the battery</b> .....	8
<b>Installing the SD card</b> .....	8
<b>Powering the camcorder</b> .....	9
<b>Switching modes</b> .....	9
<b>Recording video and taking photos</b> .....	9
<b>Playback</b> .....	9
<b>TV output</b> .....	9
<b>HDMI output</b> .....	10
<b>Power off</b> .....	10
<b>Accessing the menus</b> .....	10
<b>Operation</b> .....	11
<b>Installing and using ArcSoft MediaImpression software</b> .....	18
<b>Specifications</b> .....	23
<b>Solving common problems</b> .....	24

## **Preface**

---

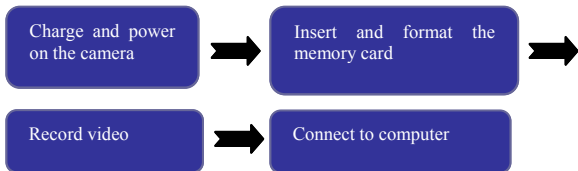
Thank-you for your purchase of a MyMuvi Digital Camcorder. Please read this manual before using this camera and put it in safe place for future reference.

The content in this manual refers to the latest information available at the time of printing. The screen display, illustration and other information in the manual are representative of the operation of the camera. Your camera may differ due to changes in firmware, technical updates and production batch.

## **Description**

---

Please use the camera in accordance with the following sequence.



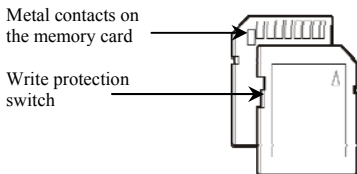
Note: Memory cards, either new or those that have been used in other digital cameras/video camera must be formatted in this camera. For long term storage, data should be copied to other media such as hard disk or CD/DVD.

## **Using a memory card**

---

This camera has no memory. It can use SD/SDHC memory card and MMC card (multimedia memory card).

There is a write protection switch on the SD memory card to prevent deleting or formatting the image files.



Push the switch on the SD memory card to the bottom and the data will be protected. Push the switch on the SD memory card to the top and the write protection will be cancelled. Be sure the switch is in the unlocked position before taking video or photos.

### **Proper care of a memory card**

- The memory card must be formatted in your camera/camcorder before use. Failure to do this may cause loss of images.
- Turn off the camcorder before inserting or removing the memory card.
- The performance of memory cards deteriorate with use. If you notice a loss of performance of your memory card it should be replaced.
- DO NOT bend the memory card since it is the precise electronic device.
- DO NOT store or use the memory card in the environment with strong electric field or magnetic field, such as the place close to the loudspeaker or TV receiver.
- Use or store the memory card in extremely hot or cold environments.
- Keep the memory card clean and dry. If the memory card is exposed to liquid or moisture, wipe the card with soft cloth.
- The memory card will become very warm after a long use, this is normal.
- Recorded data might be damaged if one of the following situations occurs:
  - Memory card is not properly formatted in the camera
  - The camera is powered off or the memory card is withdrawn during recording, deletion (formatting) or reading.
- For long term storage, data should be copied to other media such as hard disk or CD/DVD.

### **Maintaining your camcorder**

---

- The camcorder should be kept in a clean, dry and dark place when it is not used with the battery removed.
- The dust on the surface should be removed before cleaning the lens. Then use an appropriate cleaning cloth or tissue that is suitable for the cleaning the optical equipment to lightly wipe the lens. If necessary, a drop of lens cleaning fluid may be used. DO NOT use an organic solvent to clean the camera.
- DO NOT touch the lens surface with fingers.

## **System requirements**

Please refer to the following minimum requirements for your computer system to interface with the camcorder. These are the MINIMUM requirements, faster processors and more memory will result in a better user experience.

System requirements	
Operating system	Microsoft Windows 2000, XP, VISTA, Windows 7
CPU	Intel PIII667 or equivalent or faster.
Memory	More than 128MB
Sound card and graphic card	The sound card and graphic card must support Direct X version 8 or higher
CD-ROM Speed	4X or higher
Hard disk	More than 1 GB remaining space
Others	One standard USB 1.1 or USB 2.0 interface

## **Features**

The camera has several features and functions:

- Digital camcorder (recording video)
- Digital camera (taking photos)
- Mass Storage (removable SD/SDHC Card)
- 4X digital zoom

## **Package contents**

The following items are included with your camcorder



Installation  
CD



User  
Manual



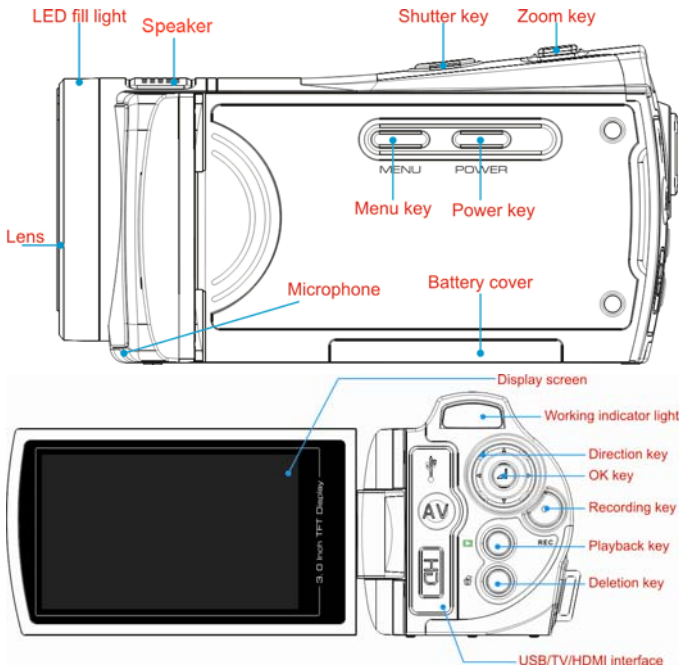
Lithium  
Battery



Audio/video  
Cable

USB  
Cable

## Appearance





## **Key functions**

<b>Key/indicator light</b>	<b>Function</b>
Power key	Powers the camera on or off
Shutter key	Press to take video or photos
Zoom key	Digital zoom; Enlarges or reduces the size of video or photos.
Menu key	Turns the menu display on or off.
Playback key	Play back photos or video
Upper direction key	Menu selection; scene selection; move the photo (when enlarging photos in the playback mode).
Down direction key	Menu selection; Self time shortcut; move the photo (when enlarging photos in the playback mode).
Left direction key	Select the file, activate fill light, switch the screen display, move the photo (when enlarging photos in the playback mode).
Right direction key	Select the file, move the photo (when enlarging photos in the playback mode), switch the resolution.
OK key	Confirm, record AVI, switch to the recording mode.
Shortcut direction key	Enter deletion status in the playback mode.
Working indicator light	Illuminates when powering the camera, taking photos, using the self timer, recording and playing back; Illuminated continuously while charging.
Indicator light for self-timer	Illuminates to indicate the self-timer mode is activated

## Getting started

---

### Install battery

The camera uses four AAA alkaline batteries (not included) or a rechargeable lithium battery (included). Open the battery cover and insert the battery. Be sure to insert with the + of the battery matching the + indicator on the camcorder. Replace the battery cover.

Your battery should be CHARGED before use. It may be charged in the camera through the USB port. Connect the USB cable to your camcorder and then to a POWERED USB port on your computer or to a universal USB type wall charger (not included).

### Install SD/MMC memory card

Open the battery cover and insert the SD/MMC memory card with the contacts facing the camcorder into the card groove in on the camcorder in accordance with the diagram on the card groove. To remove the memory card, press the SD/MMC memory card and then remove it.



#### NOTE!

- Be sure to turn off the power on the camcorder before changing the memory card.
  - Insert the card in the correct direction. DO NOT use too much force to insert the card. Doing so may cause damage to the card or the parts of the camera. If the card is difficult to insert, verify that the direction is correct.
  - Memory cards being used for the first time or that have been used on other cameras MUST be formatted before use.
-

## **Open the screen to start**

Open the LCD screen and press the power switch to power the camcorder. You may turn off the power to the camcorder by pressing the power key for two seconds after the screen is opened.

## **Switching modes**

Press the mode key to select the recording resolution.

## **Recording video**

Press the record key to start the recording. Press the record key again to stop recording in the video mode.

## **Taking still photos**

You may take still photos by pressing the shutter key.

## **Playback**

Press the playback key to enter the playback mode and browse photos or play video. Pressing the key multiple times will toggle between video and still photos.

To browse photos: Use the left key and right key to select the photos. Press the OK key to select the photo you wish to view. Use the zoom key to enlarge the photo. Press upward/downward/left/right keys to move the photos after they are enlarged.

To play video: Use the left key or right key to select the video to be played. Press the OK key to select the video you want to view. Press the OK key again to start the video. Pressing the OK key during playback will pause the playback.

## **TV output**

To output to TV or other devices with analog input insert the mini-plug of the A/V Cable (supplied) into the TV interface on the camcorder. Connect the yellow RCA plug to the composite video input of the video equipment and connect the red and white plugs to the corresponding audio input. Note: Be sure the power to the camcorder is OFF before connecting or disconnecting to the TV or other device.

## HDMI output

To connect to a device supporting HDMI, connect the HDMI cable (not included) to the HDMI interface on the camera. Then connect the HDMI cable to the corresponding input on the equipment. Note: Be sure the power to the camcorder is OFF before connecting or disconnecting to the TV or other device.

## Power Off

You may power off the camcorder by pressing the power key for approximately 2 seconds. If the camcorder is idle with no operation for a period that exceeds the automatic power off time you have selected (one minute/three minutes/five minutes), the camcorder will automatically power off to save the battery.

## Accessing the menus

Press the menu key to access the menu. Depending on the mode, either the Video or Photo menu will be displayed. Press the left/right key to select the main menu items. Press OK to select the menu and enter the submenu. Set the function parameters by using the up/down/left/right navigation keys. Press OK key to confirm your selection. The selected menu item will display the triangle indicator icon.

### ▲ Video Recording Menu



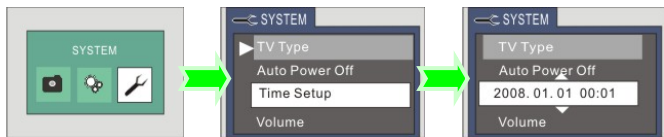
### ▲ Still Photo Menu



## ▲ Setup Menu



## ▲ System Menu



## Operation

---

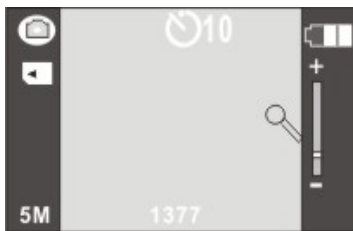
### Video Recording/Still photo mode

The camcorder starts in the video recording mode. You may take still photos by pressing the shutter key. To record video press the record key. Stop recording by pressing the recording key again. To use the digital zoom press the zoom key in the desired direction. T for telephoto or W for wide angle.

To use the LED fill light, press the left navigation button. Pressing again will turn the light off.



- ◆ Information displayed on the screen while recording video

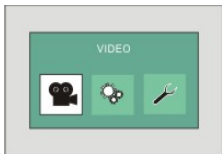


- ◆ Information displayed on the screen while taking still photos

	Icon	Icon name	Description
1		Still Photo Mode	Ready to take still photos by pressing the shutter key
2	5M	Image size	Currently selected still photo resolution
3	1377	# of photos left	The # of photos that can still be taken at the currently selected resolution.
4		SD card	Memory card inserted,  Memory card has write protection enabled
5		Countdown for self timer	Indicates the countdown of the self-timer mode
6		Zoom indication	Indicates the current digital zoom ratio
7		Battery Level	Indicates the current battery status. A red indicator means the battery is used and the camera will automatically power down
8		Video Mode	Ready to take video using the record button
9	00: 16:28	Recording time	Available recording time left or time counter for current clip being recorded
10	720P30	Video format	Resolution for the current video

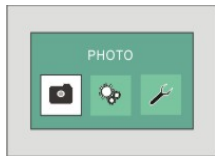
## ◆ Image menus

Press the menu key to open the main menu. Press the left and right keys to select the Image menu and press OK. In the submenu, press the menu key or OK key to return to the main menu. Use the left and right navigation keys to make the selection and press the OK key to confirm your selection. After returning to the main menu, press the menu key to exit.



Video Image Menu Options:

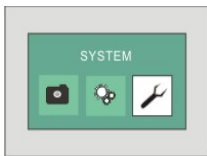
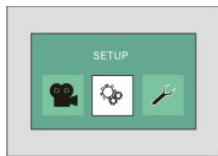
Main menu	Submenu	Description
Image quality	Best	Best quality
	Good	Better quality
	Normal	General quality
Video format	720P30	High resolution format
	WVGAP30	Moderate resolution format
	WVGAP30	Low resolution format



Still Photo Image Menu Options:

Main menu	Submenu	Description
Image quality	Best	Best quality
	Good	Better quality
	Normal	General quality
Image size	3200 x2400	8 million-pixel resolution
	2592 x1944	5 million-pixel resolution
	2048 x1536	3 million-pixel resolution
Self-timer	2sec. or 10sec.	Either 2-second or 10-second delay
	Off	Self-timer function disabled





#### ◆ **Setup menu**

The setup menu has the following options: Recording frequency, contrast, sharpness, automatic ISO, exposure compensation and exposure mode.

#### ◆ **System menu**

The system menu has the following options: TV system, automatic power off, date & time, volume, default setting, formatting, language, brightness, key-press tone and software version

### **Video/Still Photo Mode**

When powering on the camcorder it will default to the video recording mode. To enter the still photo mode press the shutter key. To return to the video mode press the record key.

In the still photo mode you can activate the self timer by pressing the right navigation key. The countdown will start after pressing the shutter key.

The LED fill light can be turned on or off by pressing left navigation key. (The fill light does not operate in the playback mode.)

Note:

- Be sure hold the camera steady when shooting. For best results, use a tripod with your camcorder.
  - The working indicator light will glow after pressing the shutter key. Avoid fuzzy photos by ensuring the camcorder is held steady while this light is on.
- 

## **Playback mode**

Use the playback mode key to enter the playback mode. Press the playback key again to switch between playback of videos or still photos.

Use the left, right, up and down navigation keys to select the file you wish to play.

When playing back a video episode, press the OK key to start the playback. While the video is playing the timer is displayed on the top right corner of the screen. Press the OK key to pause the playback or to restart the playback after pausing. While in the pause mode you may press the left or right key to move forward or backward in the video.

When playing back still photos, you can enlarge photos by pressing the zoom key towards the T position. Use the up, down, left and right navigation keys to move the photo on the screen.

### ◆ File protection

In the playback mode, press the Menu key and the screen will ask: "Protect this file?" You can press the left and right keys to select "OK" or "No" then press the OK key to confirm and exit.

### ◆ File deletion

In the playback mode press the Delete key (Trashcan) and the screen will ask: "Delete this file?" Press the left or right keys to select "All", "Yes" and "No" then press the OK key to confirm and exit.

◆ Delete and Protect Menu Options:

Main menu	Submenu	Description
File protection	Protect this file	OK locks the current file
	Unprotect this file	Ok unlocks the current files
File deletion	Yes	Deletes the current file
	All	Delete all files

**Connect to the computer to download photos/videos**

Connect the camcorder to your computer using the USB cable (included). The camcorder will be recognized by your computer as a new Removable disk in the “My Computer” window. Photos or videos are stored in the folder “DCIM\100MEDIA”. Copy the files to the hard disk of your computer from this folder.

---



**Note!**

Do not disconnect the USB cable during the file download process. Also removing the memory card while connected to USB may cause data loss.

---

## ArcSoft MediaImpression

---

The CD packed with your camcorder includes ArcSoft MediaImpression imaging software.

### Software Installation

Put the CD into the CD-ROM drive of your computer, the following menu will appear:

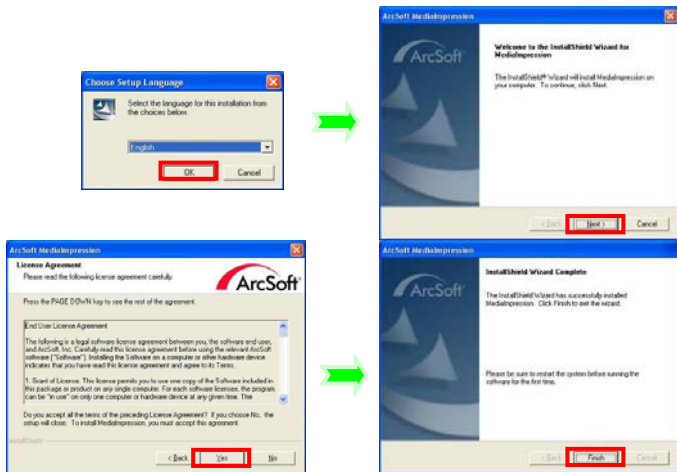


- If the CD does not automatically load, click the autorun.exe program in the root directory of the CD.

## MediaImpression Installation and Use:


Installation:

Click the “Install MediaImpression” button and complete the installation following the on screen instructions.

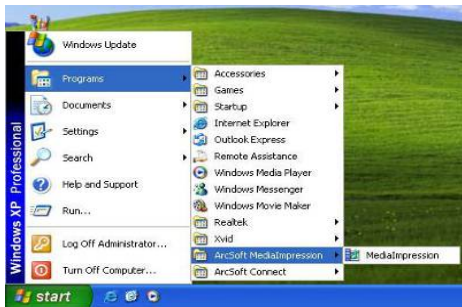


After installation, please restart the computer.

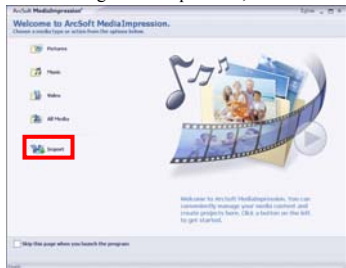
Run MediaImpression :

Double click the  icon on the desktop or follow “Start → Programs” to open:

MediaImpression



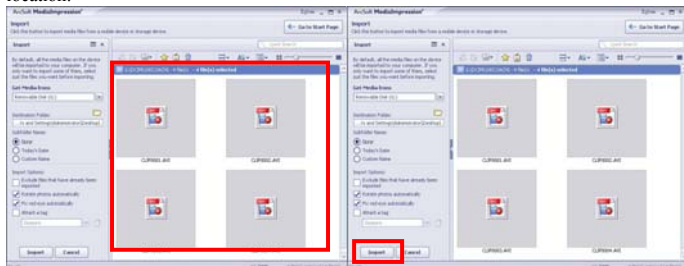
After starting MediaImpression, click the “Import” to import the media.



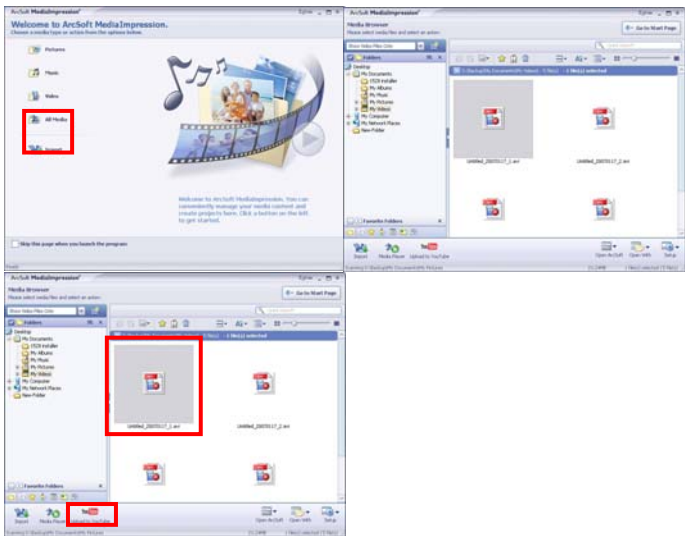
Choose the video camera storage and choose the output location.



Choose required file and click the import, selected file will be stored in the output location.



Click “Go to start page” to return to the main screen. Click the “Video” or “All media” to use the “You Tube” function.



Enter your username and password to login the YouTube, execute upload.

**Login** ✕

ArcSoft MediaImpression needs your authorization before uploading files to your YouTube account.

**YouTube Username:**

**YouTube Password:**

Save YouTube Username     Save YouTube Password



## Specifications

Image Sensor	5MP CMOS
Still Photo Resolution	3200 × 2400, 2592 × 1944, 2048 × 1536
Memory	SD/SDHC card (128MB to 16GB) (not included)
File Formats	JPEG (Still), AVI (Video)
Video Resolution	720P30(1280×720), WVGAP30(848×480), WVGAP60(848×480)
Self-timer Delay	2 seconds, 10 seconds
Digital Zoom	4 X
Exposure Mode	Center photometry/average photometry/spot photometry
Exposure Compensation	-2.0 ~ +2.0 EV
USB Interface	USB 2.0
TV Output	NTSC/PAL
Display Screen	3.0" TFT LCD
Power	Rechargeable lithium battery - 3.7V/800mAh (included) or 4 AAA alkaline batteries (not included)
Menu language	English or Spanish
Lens Focal Length	f=5.8mm
Lens Maximum Aperture	F 2.8
Automatic Power Off	1min/3mins/5mins/Off
Required Operating System	Windows 2000 / XP / Vista / Windows7
Size	123 mm × 55 mm × 64 mm

Note: The specifications of this product are subject to change due to changes in firmware, technical updates and production batch.

## **Solving common problems**

The camera does not power up after the battery is installed	The battery has insufficient charge. Replace the batteries or charge the lithium battery.
	The battery is installed incorrectly. Make sure the batteries are installed per the diagram in the battery compartment.
Camcorder will not take photos or record when the record or shutter key is pressed	The memory card is full. Transfer files from the memory card, format the memory card and then take photos or record video.
	The SD card is locked. Remove the SD card and move the protection switch to the unlocked position.
Photos are fuzzy	The camcorder was not held steady when recording. Hold the camcorder with two hands or use a tripod.
Photos and videos are “muddy”	There is insufficient light for proper exposure. For best results be sure to take photos or videos in a well lit area,
Camera Automatically Powers Off	The battery is drained. Either replace the alkaline batteries or recharge the lithium battery.
	The camcorder has exceeded the time set in the automatic power off menu.
Unable to delete the files in the camcorder	The SD card is locked. Remove the SD card and move the protection switch to the unlocked position.

