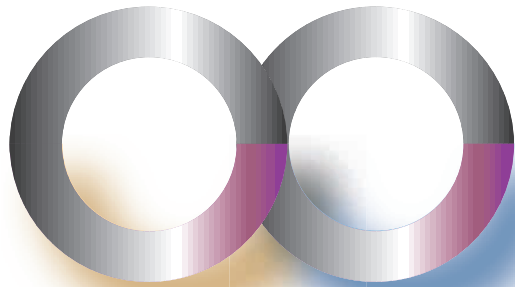


B I N O C U L A R S
I N F I N I T Y



PROMASTER®

INFINITY Binoculars

Your new PROMASTER Infinity Binoculars have been designed for a lifetime of use.

Infinity Binocular Features:

Waterproof

All Infinity Binoculars are "O" ring sealed and fully submersible; perfect for every outdoor use.

Nitrogen Filled

Infinity Binoculars are fog proof regardless of weather conditions.

Ultra Wide Field of View

You'll see more of everything you want to see.

BAK-4 Prisms

Every Infinity Binocular produces enhanced contrast and sharp images.

Long Eye Relief

Infinity Binoculars offer excellent viewing with or without eyeglasses.

Soft Rubber Armoring

The non-slip texture and soft armoring of the exterior feels secure and comfortable.

Close-Focus

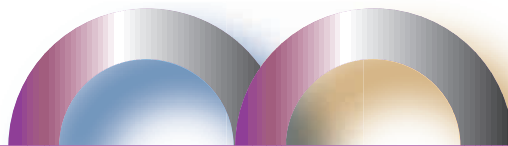
Focus to as close as 4' with the 8x45 and 10x45.

No Fault Lifetime Warranty

Whether you run over them or drop them from an airplane, gather the pieces along with your original sales receipt and return everything to PROMASTER (along with a small processing fee) and we'll replace your binoculars.*

(See Warranty for details.)

PROMASTER®



PROMASTER is a supplier of premium quality lenses, digital camera memory, batteries, accessories, filters, digital and conventional electronic flashes, camera cases and tripods.

PHOTOGRAPHIC RESEARCH ORGANIZATION, INC.
FARFIELD, CT. 06825 www.promaster.com



8x25 Compact

Field of View: 294 ft. @ 1000 yds.
Code # 6862



10x25 Compact

Field of View: 221 ft. @ 1000 yds.
Code # 6869

8x45

Field of View: 374 ft. @ 1000 yds.
Code # 6876



10x45

Field of View: 345 ft. @ 1000 yds.
Code # 6883

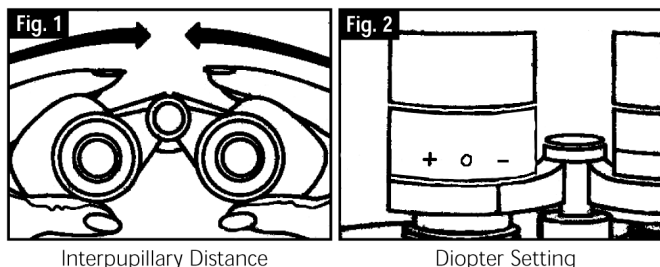
7x32

Field of View: 389 ft. @ 1000 yds.
Code # 8654

INFINITY Binoculars

Instructions for Use

Your PROMASTER binocular is a precision instrument designed to provide many years of pleasurable viewing. These instructions will help you achieve optimum performance by explaining how you can adjust the binocular to your eyes and how to care for this instrument. Read the instructions carefully before using your binocular.



Eye Adjustments (Figure 1)

How to adjust for distance between your eyes. The distance between the eyes, called “interpupillary distance,” varies from person to person. To achieve perfect alignment of lens to eye, follow these simple steps:

1. Hold your binocular in the normal viewing position.
2. Grasp each barrel firmly. Move the barrels closer together or further apart until you see a single circular field. Always reset your binocular to this position before using.

How to adjust for individual eye strength. As individual eyesight varies from one person to another, all PROMASTER binoculars have a diopter setting feature which allows you to fine tune the binocular to your vision. Follow the focusing instructions below for your type of binocular.

Focusing

1. Adjust interpupillary distance. (Figure 1)
2. Set the “diopter setting” (Figure 2) to zero and view a distant object.
3. Keep both eyes open at all times.
4. Using a lens cover or your hand, cover the objective (front) lens of the same side of the binocular that has the “diopter setting.” This is usually the right side. (The left side on zoom models.)
5. Using the center focus wheel, focus on a distant object with fine detail (e.g., brick wall, tree branches, etc.) until it appears as sharp as possible.
6. Uncover the objective lens on the diopter side, cover the other objective lens, then view the same object.
7. Using the “diopter setting” adjustment ring, focus the same object being viewed. Caution should be used as over turning or forcing the diopter eyepiece can cause damage or cause the eyepiece to break away from the chassis.

8. Your binocular should be adjusted for your eyes. Focus at any far or near distances can now be attained simply by turning the center focus wheel. Make a note of the diopter setting for your eyes for future reference.

Waterproof • Fog Proof

Your PROMASTER binocular is designed and built utilizing the latest waterproof and fog proof technology. PROMASTER waterproof models are O-ring sealed for complete protection. Fog proof protection is achieved from dry nitrogen purging to remove all internal moisture.

Eyecups

Your PROMASTER binocular is fitted with twist-up eyecups designed for your comfort and to exclude extraneous light. If you wear sun/eyeglasses, leave the eyecups in the down position. This will bring your eyes closer to the binocular lens thus providing improved field of view.

Instructions for Care

Your PROMASTER binocular will provide years of trouble-free service if it receives the normal care you would give any fine optical instrument. Non-waterproof models should not be exposed to excessive moisture.

1. If your binocular has roll-down, flexible eyecups, store it with the eyecups up. This avoids excessive stress and wear on the eyecups in the down position.
2. Avoid banging and dropping.
3. Store in a cool, dry place.
4. Looking directly at the sun with your binocular may be very harmful to your eyes.

Cleaning

1. Blow away any dust or debris on the lens (or use a PROMASTER lens pen).
2. To remove dirt or finger prints, clean with a “microfiber” cleaning cloth like the PROMASTER SoftClean or MicroClean soft cleaning cloth. Rub lightly in a circular motion. Use of a coarse cloth or unnecessary rubbing may scratch the lens surface and eventually cause permanent damage.
3. For a more thorough cleaning, photographic-type lens cleaning fluid like PROMASTER OpticClean may be used. Always apply the fluid to the cleaning cloth ~ never directly on the lens.